

Tolomatic increases electric linear actuator force to 445 kN

06 May 2026

Tolomatic has extended the force of its electric linear actuators, now taking on applications previously possible only with hydraulic technology. The brand's new RSX50 can achieve force of 445 kN (100,000 lbf), pushing the boundaries of electro-mechanical actuation and providing a more precise and reliable alternative to hydraulic cylinders. The linear actuators are distributed in the UK by INMOCO, which can support application development with motors, drives, and associated equipment.

The Tolomatic RSX50 achieves its high-force rating with a maximum stroke length of 630 mm and a speed up to 432 mm per second. The linear actuator also features a dynamic load rating of 836 kN. High force is accompanied by accuracy, with a planetary roller screw option achieving +/-0.023 mm accuracy over 300 mm stroke.

Hydraulic replacement

This performance makes the RSX50 suitable as a replacement for hydraulic actuators across applications such as metal forming and pressing, timber processing, automotive manufacturing, and construction. In addition to enhanced control, electric actuators can significantly decrease the time and cost of hydraulic actuator maintenance, and increasing productivity as a result.

The new actuator achieves its high force while retaining a compact, lightweight footprint, particularly compared to hydraulic designs. Options are available for inline motor mounting that directly couples the driving shaft, or a reverse parallel configuration with the motor mounted alongside the actuator. The reverse parallel installation reduces overall length and offers a belt reduction drive with a 1:1 ratio. Optional geared motor

reduction is also available, with built-in 4:1 or 6:1 reduction eliminating the need for external gearboxes.

Common across Tolomatic actuators, the RSX50 is built for durability. The actuator can support up to six million pressing moves at 100% of its rated values. Durability features include two roller bearings to support high axial loads and forces for long life, while additional composite bearings prevent internal rotation of the thrust tube.

Long-life durability

The thrust tube itself has been coated with a salt bath nitride treatment that increases corrosion protection, making it resistant to a range of contaminants. Meanwhile, a durable seal design prevents contaminants from entering the housing.

Tolomatic also offers an oil-cooled option that can provide up to two times the speed and thrust capacity of grease-coated designs. This is achieved with an unpressurised synthetic oil bath around the screw and nut that reduces internal operating temperature. The RSX50, named to denote the force capability in 50 US tons, joins Tolomatic's existing RSX Extreme Force electric actuator range that also includes 10-, 15-, 20-, 25-, and 33-ton variants.

To enhance motor integration flexibility, Tolomatic's Your Motor Here mounting configurator enables integration of a wide range of motor types and brands. On selection, the actuator is shipped with the appropriate mounting hardware. Tolomatic actuators are distributed in the UK by motion specialist INMOCO, which can advise on and supply servo drives and motors, such as the Kollmorgen AKM2G servo motor and AKD2G servo drive, to provide a complete package.

Image Captions:

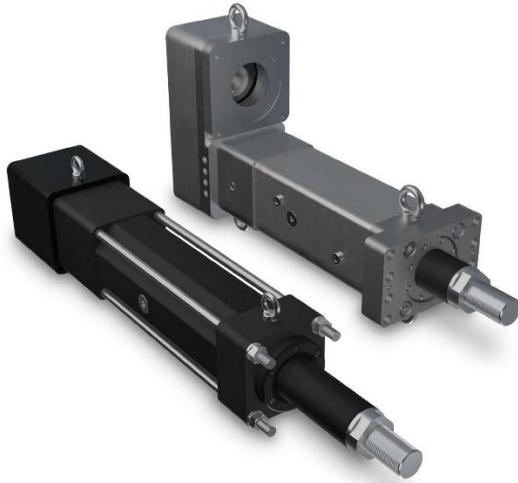


Image 1: The new Tolomatic RSX50 actuator achieves its high strength while maintaining a compact and lightweight size, especially compared to hydraulic designs.

The image(s) distributed with this press release are for Editorial use only and are subject to copyright. The image(s) may only be used to accompany the press release mentioned here, no other use is permitted.

About INMOCO

Established in 1987, INMOCO now offers an extensive range of motion control equipment including: compact servo amplifiers, position controllers, stepper motors, PLC controllers, linear motors, sensors, electric actuators and gearheads. INMOCO's product portfolio is supported by extensive applications and technical expertise, in addition to customer-specified electro-mechanical development and sub-assembly services; including calibrating and testing in a class 10,000 clean room facility.

PR Agency:

Marketing + Technologies Group: Elizabeth Preciado A.

Progress House, Great Western Avenue,

Worcester, WR5 1AQ, UK

Tel: +44 (0) 1905 917477

liz.preciado@markettechgroup.com

news.dmaeuropa.com

Press Contact:

INMOCO: Gerard Bush

Tel: +44 (0)1327 307600

GerardB@inmoco.co.uk

inmoco.co.uk