

PVC beads are tougher than they look

11 June 2024

In the past, the common misconception among contractors and builders was that if you required a durable bead for render or plasterboard, steel was the way to go. However, times have changed, and PVC beads from companies such as Renderplas have proven their mettle as a tough, modern solution for a long lasting exterior or interior finish.

No more damage in transit

Steel is a preferred material for structural applications, but for a thin profile like a render or plasterboard bead, it has severe limitations. Take transport for example. In a delivery or tradesman's van packed full of other building materials and tools, it's easy for steel beads to be crushed or warped in transit, rendering them unusable. Conversely, PVC beads retain their shape during transit. As a result, no costly, time consuming repeat orders are required to replace damaged goods arriving on site.

Taking an impact

Beads are designed to offer strong reinforcement to the vulnerable edges of render or plasterboard. Due to their location, they can be susceptible to mechanical damage - especially in areas of high footfall. PVC is an ideal material choice in this application, as it can better withstand impacts. Polymer modifiers in the beads effectively dissipate shockwaves, increasing resilience and properly protecting the render or plasterboard. Thanks to excellent shape retention, the risk of dents after a hit is reduced compared to steel too.

Never getting rusty

Following installation, galvanised or coated steel beads can quickly corrode and stain the exterior of a building, a problem that is exacerbated in coastal areas or wet climates. It's a similar story for internal use, either when plaster drying times are extended through damp weather or if beads are installed in kitchens, bathrooms or pool enclosures. PVC is an inherently non corrosive material, which makes it much more durable in these scenarios. With no rusting or staining, PVC beads actively preserve render and plasterboard in harsh environments, unlike their metal counterparts.

Hidden strengths

Beyond the inherent material benefits of PVC, Renderplas beads have other hidden strengths. All beads in the range are UV stable, staying inconspicuous as a building ages. They can take the heat too. Renderplas beads will not contribute to the combustion of a render system.

A tough customer

PVC beads are so robust that the only credible challenger in terms of strength and corrosion resistance is stainless steel. However, PVC achieves similar performance at a fraction of a cost, while offering better shape retention and a totally rust free aesthetic. In fact, Renderplas guarantees that its PVC beads will last a minimum of 25 years, or at least the complete lifetime of a render. Consequently, architects, builders and contractors have access to a cost effective solution that is as tough as they come.

Image captions:



Image 1: Renderplas PVC beads are tougher than they look.

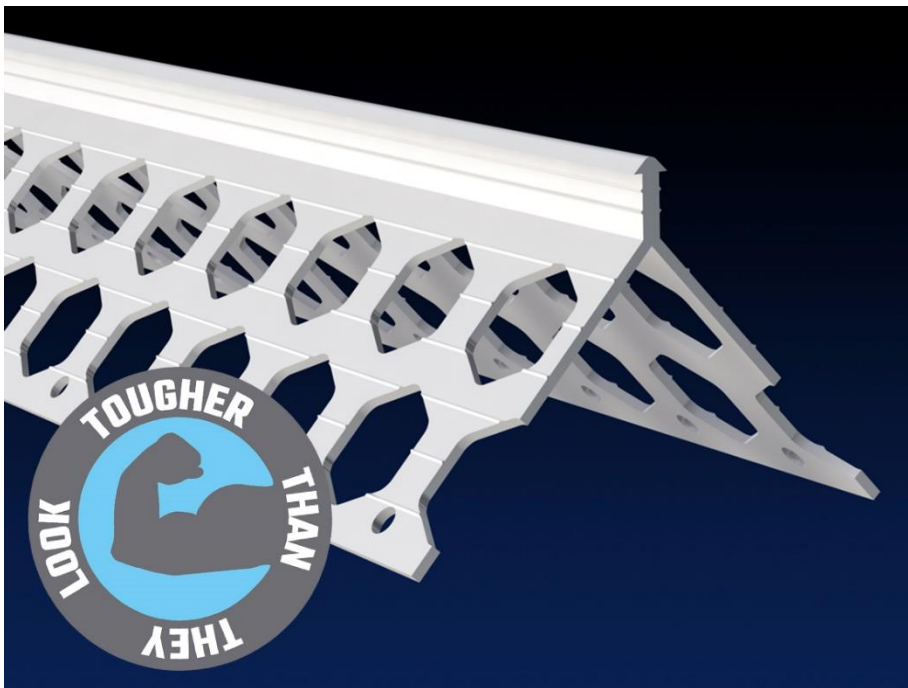


Image 2: Renderplas PVC beads are tougher than they look.

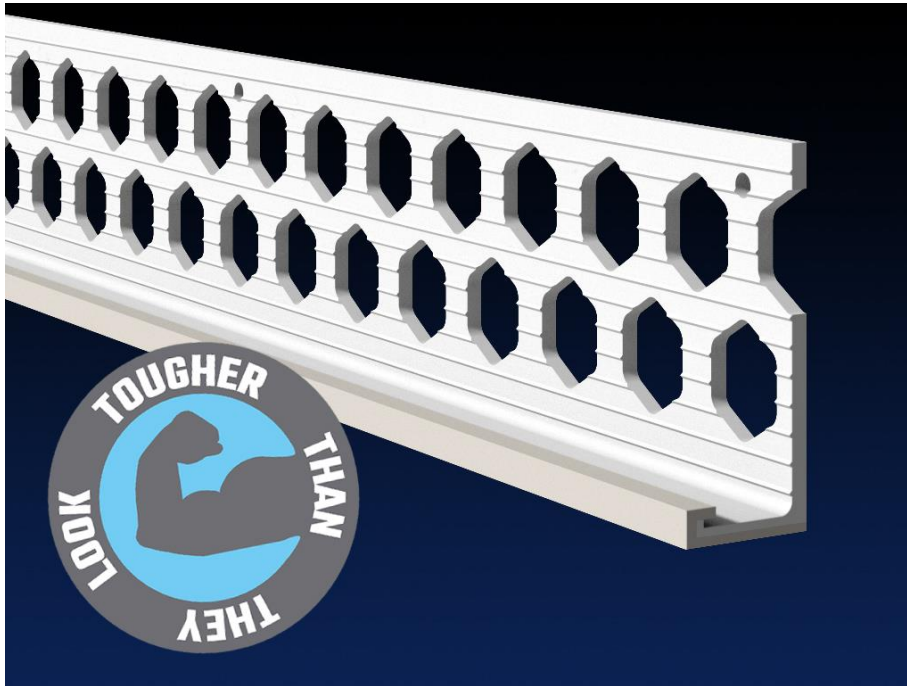


Image 3: Renderplas PVC beads are tougher than they look.

The image(s) distributed with this press release are for Editorial use only and are subject to copyright. The image(s) may only be used to accompany the press release mentioned here, no other use is permitted.

About Renderplas

Renderplas was formed in 1990 to offer the plastering industry a new concept in beading. The first manufacturer of PVCu beads in the UK, Renderplas is the leading exponent in the field.

The business sets out to address the shortcomings of traditional profiles by designing a range of beads in PVCu to suit the British and Continental market. The key benefit of PVCu beads is that they use the most cost-effective, non-corrosive material to produce robust plasterer friendly beads. Renderplas PVCu beads conform to BS EN 13914-1:2016 - External Rendering.

Renderplas products are designed to be unobtrusive with an extremely narrow arris, making it ideal for scratched or scraped finishes. Very popular with major house builders, its beads are available in white or ivory as standard to blend with most coloured renders. However, in order to give architects and contractors even more freedom to use through-coloured renders in more vibrant colours, a range of beads in 7 further colours are also available for popular render depths.

Used internally, whether, in conjunction with wet plastering or dry lining, they will not stain during lengthy drying out periods and offer superior protection against impact in heavy traffic areas.

By specifying a Renderplas PVCu bead, the problems associated with traditional beads and the aggravation of costly callbacks are avoided. Two different CAD file formats are available for Renderplas profiles from the Downloads page of its web site. Alternatively, register with FastrackCAD to use all of their architectural database services.

Press contact:

Renderplas

Daniel Leedham-Green

Managing Director

Tel.: +44 (0)1299 888330

enquiries@renderplas.co.uk

PR agency:

DMA Europa

Jake Lacey-Watts

Progress House, Great Western Avenue, Worcester, WR5 1AQ, UK

Tel.: +44 (0) 1905 917477

jake.lacey-watts@dmaeuropa.com

news.dmaeuropa.com