

WSCAD releases Update 2 for ELECTRIX ROCKET

13 August 2024

WSCAD has launched a new update for its ELECTRIX ROCKET E-CAD software, which includes several additional user-friendly features designed to make a wide range of electrical design tasks easier and more efficient.

The ELECTRIX ROCKET software supports multiple disciplines, including electrical engineering, P&ID and fluid engineering, cabinet design, building automation, and electrical installation planning. The update delivers new features and improvements aimed at streamlining engineering, integration and documentation.

Users can now transfer a symbol's formatting to others with a single click, saving time on repetitive tasks, while custom column configurations can be tailored and saved for future use. The option to preview symbols before placement to make precise connections easy has been added, as have several other improvements designed to enhance the overall workflow and usability of the software.

The update offers several powerful benefits aimed to making documentation more accurate and less complicated. For example, users can now export analyses to custom Excel templates with automatic formatting and formulas. New dimensioning options, such as chain and ascending dimensions, enable precise and clear project visualization across all disciplines.

When it comes to engineering, the Terminal Manager tool now supports more complex terminal structures, with the maximum number of definable levels increasing from 10 to 50. Additionally, users can flexibly edit data points within

symbols, either overwriting existing data points or inserting new ones in previously empty symbols.

The update also delivers robust integration benefits. The new interface for the Phoenix Contact clipx WIRE assist system streamlines automated production processes. Users can export all wiring data, including length, cross-section, size, labelling, and slinging equipment, directly to the Phoenix Contact system. This allows semi-automatic assembly of wires, significantly saving production time and enhancing efficiency.

Alin Dragan, Product Manager at WSCAD, said: “This update reinforces our commitment to providing users with the best experience possible. ELECTRIX ROCKET brings significant enhancements to electrical engineering workflows, making daily tasks more efficient and intuitive. Our ongoing dedication to continuous improvement ensures that our users have access to the most advanced tools and features available in the E-CAD industry.”

The updated software is available for rental, with rental licenses offering free updates, upgrades, and extended maintenance services. Installing the update is straightforward and can be accessed by simply launching the ELECTRIX ROCKET software as normal.

For more information on the new features and enhancements, visit the WSCAD ELECTRIX ROCKET Update 2 page here:

<https://www.wscad.com/en/electrix/rocket-update-2/>

Image captions:

Image 1: WSCAD has launched a new update for its ELECTRIX ROCKET E-CAD software.

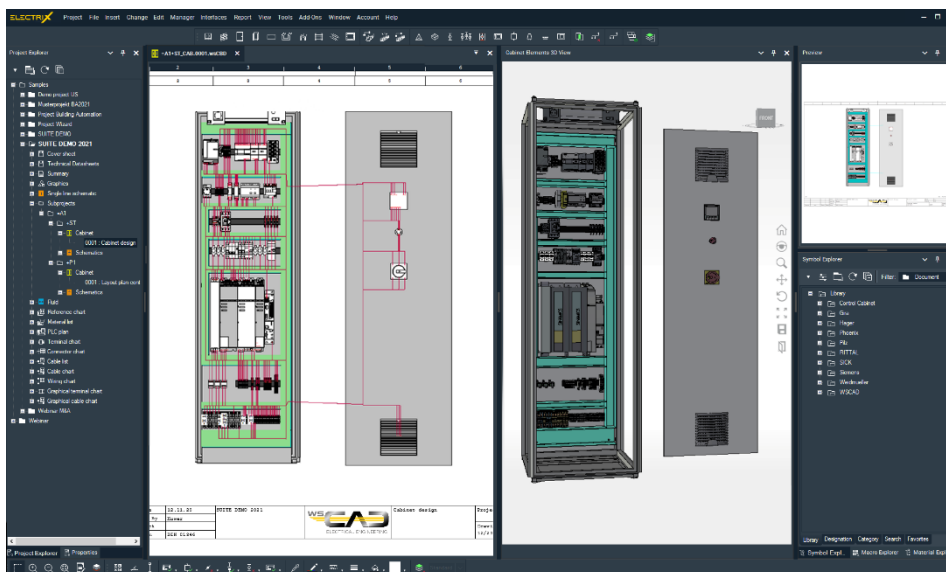


Image 2: The update delivers new features and improvements aimed at streamlining engineering, integration and documentation.

The image(s) distributed with this press release are for Editorial use only and are subject to copyright. The image(s) may only be used to accompany the press release mentioned here, no other use is permitted.

About WSCAD

WSCAD is part of the Buhl Group, which has 700 employees and has been specializing in the development of Electrical-CAD solutions for over three decades. Customers include medium-sized companies, international corporations, and planning and engineering offices. More than 40,000 users from the machine and plant construction sectors, as well as from building automation and installation technology, work with the integrative WSCAD software. On a platform with a central database, it combines the six disciplines of electrical engineering, switch cabinet construction, process and fluid engineering, building automation, and electrical installation. A component exchange is immediately completed in the plans of all disciplines. Mechanisms for standardizing, reusing, and automating processes in electrical design and building automation shorten the planning and construction times from several weeks to just a few hours or minutes, with higher quality work results. Maintenance personnel and service technicians use the WSCAD Cabinet AR App to scan field devices and components in the control cabinet using a smartphone or tablet, and have immediate access to current electrical plans, including BMK, item data, and the original data sheets from the manufacturers.

Users can find over 2.1 million data sets from more than 400 manufacturers in the WSCAD-, EDZ-, DWG- and 3D-STEP format in the world's most powerful Electrical-CAD data library wscaduniverse.com. Use is free of charge, as is the posting of product data by the manufacturers. Eleven seamlessly interlocking services from WSCAD Global Business Services round off the range of services: these include engineering and migration check-ups, workflow and processes, consulting and training, or digitizing paper documents and converting different Electrical-CAD formats.

*) The mentioned brand names, logos, and trademarks remain the property of their respective owners. Listing of companies or their logos is not intended to imply endorsement or a direct connection to WSCAD GmbH.

Press contact:

WScad

Zishan Shaikh

Tel.: +44 (0) 203 966 2446

zishan@wscad.com

PR agency:

DMA Europa

Anne-Marie Howe

Progress House, Great Western Avenue, Worcester,
WR5 1AQ, UK

Tel.: +44 (0) 1905 917477

anne-marie.howe@dmaeuropa.com

news.dmaeuropa.com