

Full Steam Ahead with KMT's Bespoke Engineering Services

29 August 2023

Already popular for its comprehensive engineering services, KM Tools Ltd (KMT) continues to champion the delivery of bespoke machinery and services. This is further underpinned, thanks to its recent significant investment in a state-of-the-art laser cutting machine and press brake, enhancing its dedication to providing an all-encompassing suite of engineering solutions.

KMT's commitment to offering an integrated approach to each project means that equipment is delivered cost-effectively and in a timely manner. As Group Engineering Director at KMT, Adrian Degg explains, "Design is an essential part of every project. Our expert engineering teams closely collaborate with customers to scope out application requirements, creating blueprints and CAD models for sign-off in specified formats. Virtually any machine design is possible when working together with a turnkey service provider like KMT."

With design complete, KMT's in-house fabrications facility quickly produces custom equipment frames and tooling. Their LVD type PPEB320/30 press brake and LVD type Phoenix FL-3015 6 kW fibre laser cutting machine can manufacture to the highest quality standards. "Machines are more than just metal. A complete electromechanical approach means almost any system can be integrated into a

machine design. This includes powertrains, hydraulics, pneumatics, electronics, controls, and instrumentation," Adrian says.

Beyond creating new machines, KMT's robust refurbishment service breathes new life into legacy equipment, extending their service life and greatly improving efficiency and reliability, at a significantly decreased cost compared to a new machine purchase. After building and testing, KMT manages delivery and installation at the customers production facility. With reduced lead times and a complete in-house approach, it ensures swift and straightforward machine installation, minimising operational downtime.

KMT's services do not stop there. It supports the future reliability of equipment with round-the-clock maintenance support services. "Maintenance personnel can be made available to proactively service machines, reducing downtime, and ultimately ensure availability. This can even include stationing dedicated teams at production facilities," Adrian adds.

KMT's comprehensive suite of design, fabrication, build, installation and maintenance services – supported by advanced laser cutting and press brake capabilities – ensure that no engineering project is too big or too complex. Their unrivalled blend of in-house manufacturing, state-of-the-art machinery, and technical expertise makes KMT the go-to partner for bespoke engineering solutions.

Image captions:



Image 1: KMT provides a bespoke engineering service for its customers.

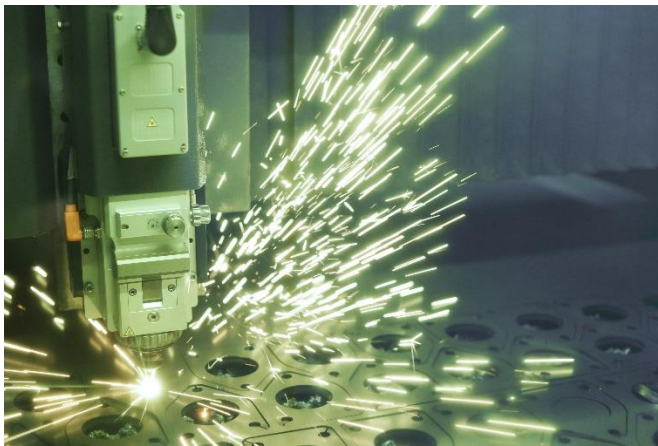


Image 2: High-speed laser cutting forms part of the KMT service offering.



Image 3: KMT provides on-site machine installation and maintenance.

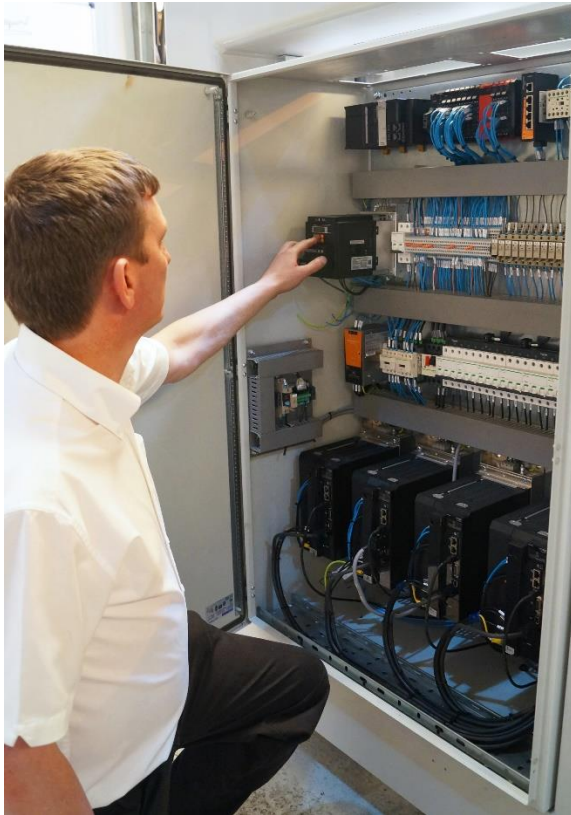


Image 4: KMT provides on-site machine installation and maintenance.

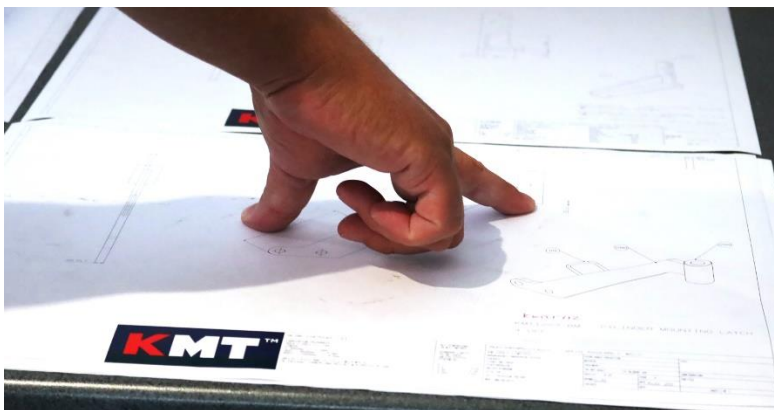


Image 5: KMT can provide a full machine design service or work to customer design specifications.

The image(s) distributed with this press release are for Editorial use only and are subject to copyright. The image(s) may only be used to accompany the press release mentioned here, no other use is permitted.



About KM Tools Ltd

KM Tools Ltd (KMT) specialises in manufacturing, maintaining and renewing specialised machines used for the manufacture of automotive components, with a specialist focus on emission control (Exhaust, CAT & DPF) product manufacture. It also specialises in providing precision assembly-line jigs and machines for the rail industry.

Its machines are used by leading brand manufacturers building parts for the OE market and the automotive aftermarket across the globe. Our manufacturing and service centre is based in a purpose built facility the Midlands from which it manufactures, services and rebuilds and supports hundreds of individual machines.

KMT can service, support and re-manufacture most machines from any original manufacturer, including one-off custom designs. It also develops tooling and workholding solutions such as bespoke automated, or semi-automated mandrels, jig and fixturing systems.

Press contact:

KM Tools Ltd.

Adrian Degg

Tel.: + 44 (0) 1538 758 946

engineering@kmt.tools

PR agency:

DMA Europa

Jake Lacey-Watts

Progress House, Great Western Avenue, Worcester, WR5 1AQ, UK

Tel.: +44 (0) 1905 917477

jake.lacey-watts@dmaeuropa.com

news.dmaeuropa.com