

Klarius committed to providing aftermarket exhausts for critical vehicle repairs

08 April 2020

Klarius Products Ltd, the UK's largest aftermarket exhaust manufacturer, is uniquely well placed to supply components to help garages carry out critical repairs during the COVID-19 outbreak. Klarius delivery drivers and warehouse staff will provide customer access to the full 11,000+ range, after Ben Rimmington, Co-Director for Road Safety, Standards and Services at the Department for Transport confirmed logistical work as essential.

[See how Klarius is supporting the exhaust repair needs of healthcare workers.](#)

For workers at hospitals, supermarkets and in public services – travel is essential. While the UK Government has postponed mandatory MOT testing for six months, garages and the aftermarket supply chain are working to ensure that critical vehicle repairs can still be carried out when needed. This means that members of the public and key workers alike can stay mobile for essential journeys during the COVID-19 outbreak.

Mark Brickhill, CEO at Klarius Products, commented: “This is a challenging time for all of us, especially for those on the frontline. To support their repair needs, we will provide our full range of quality exhausts, catalytic converters, diesel particulate filters and mountings - with over 90% delivered before 12 noon next day. Unlike other suppliers, our van fleet remains fully operational and we manufacture in the UK, thus avoiding any supply chain disruption. Both product availability and service

are second to none and we will do whatever it takes to meet the needs of all our customers, enabling garages to carry out critical repairs.

“In some cases, we are working directly with essential workers in the healthcare sector to ensure they receive the parts they need as fast as possible. Our goal is to offer a flexible and capable logistics service to all our customers during this period.”

The Department for Transport has made clear that all drivers must continue to ensure that their vehicle is safe to drive ('roadworthy'). A vehicle can be unsafe even if the MOT expiry date has been extended.

[Find out how to check your vehicle is safe](#) and read the rules about vehicle maintenance, safety and security.

Drivers can be fined up to £2,500, be banned from driving and get 3 penalty points for driving a vehicle in a dangerous condition, so drivers should still take their vehicles to be repaired. Also, if delaying a MOT test, it is important that drivers inform their insurers and continue driving only with their agreement to maintain cover.

Klarius Products develops, tests and manufactures its parts in-house, delivering emissions control components that provide OEM levels of performance. All applicable products are type-approved to EU legislative standards. The range encompasses vehicle applications of almost any design and age. A 2-year warranty and a Fit First Time guarantee are standard.

The Klarius Group of Companies also includes Emissco, a leading manufacturer of fluids and aerosols. A premium partner of Yara in the UK and Ireland, the world's largest manufacturer of AdBlue®, Emissco will continue to deliver AdBlue®,

primarily in 10L containers (representing over 90% of sales) to retailers, garage forecourts, motor factors and repair shops.

At the Klarius Group of Companies, we are striving to offer you the best possible service during the COVID-19 outbreak. Please [click here](#) for the latest company service update, which confirms travel to work authorisation for both garage and AutoFactor staff.

Image captions:



Image 1: Klarius is working directly with essential workers in the healthcare sector to ensure they receive the parts they need as fast as possible.



Image 2: Klarius is working directly with essential workers in the healthcare sector to ensure they receive the parts they need as fast as possible.

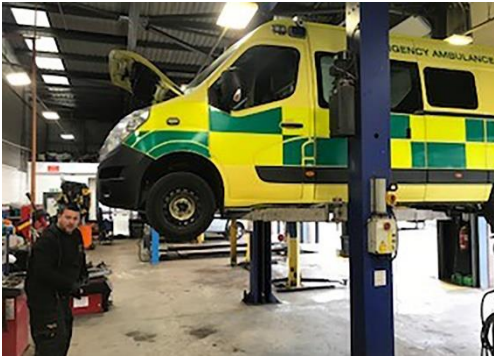


Image 3: Klarius is working directly with essential workers in the healthcare sector to ensure they receive the parts they need as fast as possible.



Image 4: Cleaner Environment and 100% Emission Control Logo's



Image 5: A premium partner of Yara in the UK and Ireland, the world's largest manufacturer of AdBlue®, Emissco will continue to deliver AdBlue®, primarily in 10L containers (representing over 90% of sales) to retailers, garage forecourts, motor factors and repair shops.

The image(s) distributed with this press release are for Editorial use only and are subject to copyright. The image(s) may only be used to accompany the press release mentioned here, no other use is permitted.

About Klarius Products

Klarius Products is a dedicated Emission Control Products manufacture and supply company servicing primarily the UK and EU markets. The business supplies type approved exhausts, CATs and DPFs designed, developed and manufactured in the UK and delivered via its own logistics operation. Klarius Products operations are centred on the manufacturing, R&D, test track, logistics and stock facility hub based in Cheadle in the UK.

Press contact:

Klarius Products Ltd.

James Ellison

Tel.: +44 (0)1538 752 561

James.Ellison@Klarius.EU

PR agency:

DMA Europa

Jake Lacey-Watts

Progress House, Great Western Avenue, Worcester,
WR5 1AQ, UK

Tel.: +44 (0) 1905 917477

jake@dmaeuropa.com

news.dmaeuropa.com