

WDS adds to ball transfer unit range with medium duty models

28 June 2022

Standard parts and components supplier, WDS Components LTD, has extended its range of ball transfer units with a new range of medium duty models. Used on conveyor systems, WDS' new units are machined rather than pressed, enabling them to support and move heavier loads weighing up to 350kg. Commonly referred to as Euro style, the designs are available in stainless as well as carbon steel, making them highly durable and resistant to corrosion, enabling long-life use.

With omnidirectional movement, ball transfer units comprise a recessed ball, surrounded by ball bearings and an outer bearing race, mounted within a housing. Positioned in rows, the rotation of the recessed balls enable the easy movement of payloads travelling across them, and the units are commonly used in conveyor systems including transfer tables. As such, they can be used in manufacturing processes, as well as warehouse packaging and materials handling, through to airport baggage handling systems.

The new medium duty range of ball transfer units is manufactured by a machine cutting process that retains strength and rigidity, enabling the units to transport higher weight loads. Versions include a carbon steel and zinc plated body with a Steel 9Cr18Mo ball, and the units can also operate in climates from -20°C to +60°C. A model with a 304 stainless steel body and ball also adds protection in moisture-prone environments or when facing exposure to more aggressive chemicals.

The new ball transfer units also extend the range of diameters to achieve more flexible conveyor system builds, from 31mm up to 54mm. The units are also low profile, starting from a height of just 21mm up to a maximum of 36.5mm.

The medium duty range extends WDS' existing light duty ball transfer units that are available in a variety of styles, sizes, materials, and mounting options. WDS also supplies heavy duty versions with a load capacity up to 2,000kg. For flexible conveyor design requirements, WDS' range of ball transfer units includes surface mount options with bolt-down rollers for secure fastening to flat surfaces. For low profile design requirements, recessed-mount ball transfer units fit into pre-defined holes. Meanwhile, spring-loaded ball transfer units provide shock resistance for higher loads.

Full details of the new medium duty range of ball transfer units, under product code WDS569, can be found on wdscomponents.com. Free CAD images download in a variety of formats are available online, as well as full specification, to enable fast and simple design integration.

The new ball transfer units are also included within WDS' stock guarantee offer, guaranteeing availability for same-day despatch from WDS' Leeds facility, or offering a price discount on the remainder of any unavailable quantity.

WDS also provides an additional range of conveyor system components including clamping rails and rods, as well as guide rails and brackets.

Image Captions:

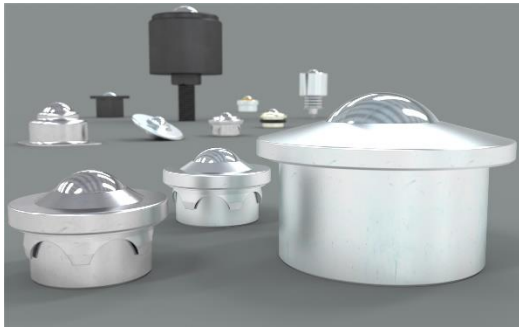


Image 1: WDS Components range of ball transfer units with a medium duty model.



Image 2: Range of ball transfer units is manufactured by a machine cutting process that retains strength and rigidity, enabling the units to transport higher weight loads.

The image(s) distributed with this press release are for Editorial use only and are subject to copyright. The image(s) may only be used to accompany the press release mentioned here, no other use is permitted.

About WDS Components Ltd

WDS Components is the home of standard parts and machine accessories. Established in 1952 'Woodside Die Sinking Company' made jig and die parts to speed up production in tool rooms, WDS Components has grown from humble beginnings to become a leading European manufacturer and global distributor of high quality durable parts at competitive prices. We supply components, standard parts and machine accessories to original equipment manufacturers, maintenance engineers, small businesses and individuals all over the world. Over 98% of our range is available from stock and can be shipped the same day from our global distribution centre in the UK, using best in class worldwide logistics companies.

We provide unrivalled choice and unequalled availability.

WDS Components are proud to support some of the most prestigious engineering companies and brands in the world, who all trust WDS Components to service their needs.

We are committed to engineering excellence and continuous improvement. Our team of in-house engineers has expertise spanning several decades and is a blend of highly experienced and new generation graduate engineers who focus on the latest developments in design and manufacturing technology.

Our entire range of products is available to purchase on our website [WDS COMPONENTS.COM](https://www.wds-components.com) where designers and manufacturers alike can download 3D models of all components in the widest range of formats available.

WDS Components provide solutions for customers who require a wide

and growing range of high quality, competitively priced products, coupled with incredible product availability and same day despatch, backed up by easily accessible technical support.

Further Information:

Website: WDSCOMPONENTS.COM

Email: Sales@wdscomponents.com

Press contact:

WDS Components

Mark Moody

Tel.: +44 (0)113 2909852

MMoody@wdscomponents.com

PR agency:

DMA Europa

Elizabeth Patrick

Progress House, Great Western Avenue, Worcester,
WR5 1AQ, UK

Tel.: +44 (0) 1905 917477

liz@dmaeuropa.com

news.dmaeuropa.com